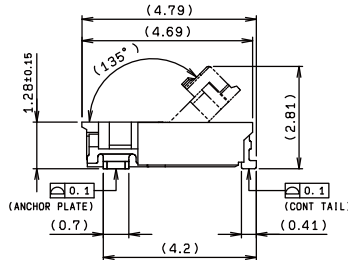
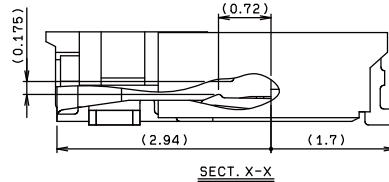
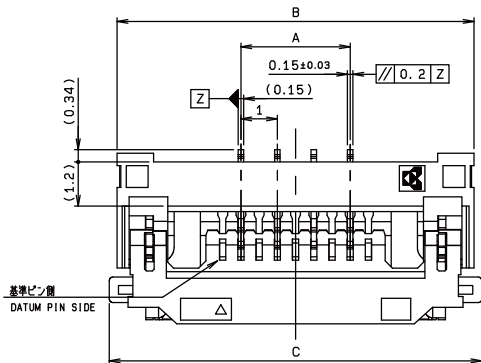


0.5mm Pitch (Even pin loading type)

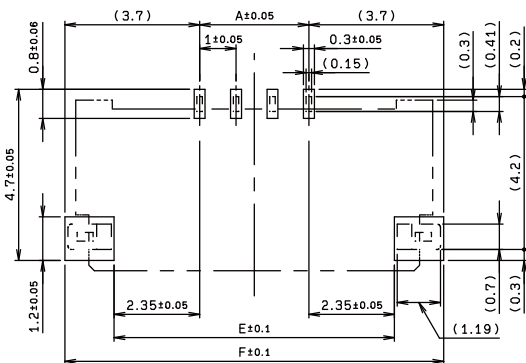
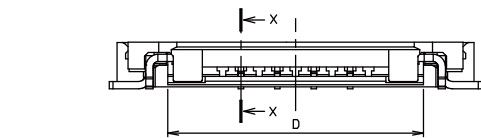
SERIES

6811

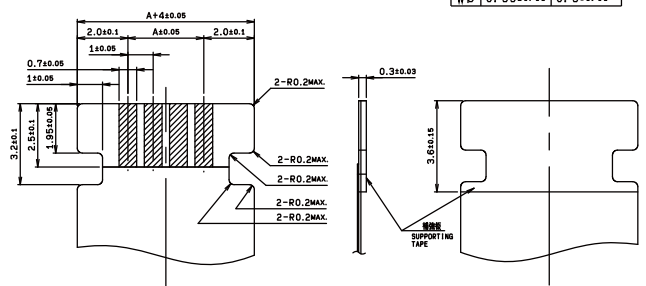
1.0mmピッチ RA SMT 下接点ワンタッチロック
1.0mm Pitch RA SMT Bottom contact One-touch lock



極数 NO. OF POS.	A	B	C	D	E	F
4	3.0	9.8	10.23	7.02	7.7	10.4
5	4.0	10.8	11.23	8.02	8.7	11.4
6	5.0	11.8	12.23	9.02	9.7	12.4
7	6.0	12.8	13.23	10.02	10.7	13.4
8	7.0	13.8	14.23	11.02	11.7	14.4
9	8.0	14.8	15.23	12.02	12.7	15.4
10	9.0	15.8	16.23	13.02	13.7	16.4
11	10.0	16.8	17.23	14.02	14.7	17.4
12	11.0	17.8	18.23	15.02	15.7	18.4
13	12.0	18.8	19.23	16.02	16.7	19.4
14	13.0	19.8	20.23	17.02	17.7	20.4
15	14.0	20.8	21.23	18.02	18.7	21.4



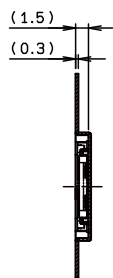
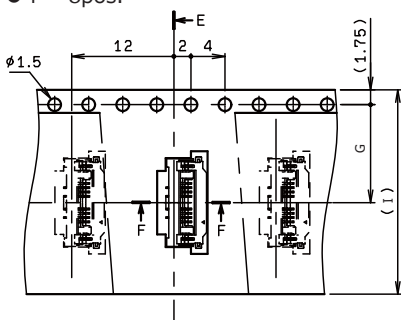
参考パターン寸法
REFERENCE PATTERN LAYOUT



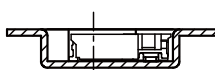
推奨FPC/FFC寸法
RECOMMENDED FPC/FFC

	FPC	FFC
M	1.5±0.1	1.5±0.08
WD	0.35±0.05	0.3±0.05

●4 ~ 8pos.

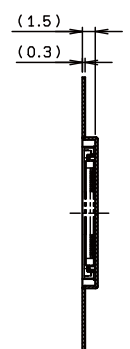
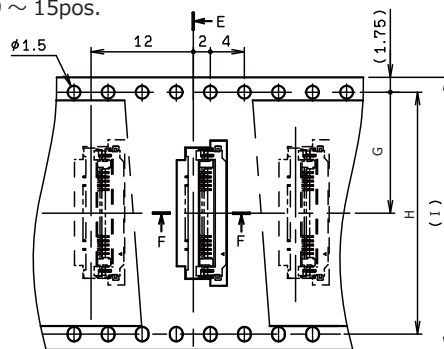


SECT. E-E



SECT. F-F

●9 ~ 15pos.



SECT. E-E

極数 NO. OF POS.	G	H	I
4	11.5	—	24.0
5	11.5	—	24.0
6	11.5	—	24.0
7	11.5	—	24.0
8	11.5	—	24.0
9	14.2	28.4	32.0
10	14.2	28.4	32.0
11	14.2	28.4	32.0
12	14.2	28.4	32.0
13	14.2	28.4	32.0
14	14.2	28.4	32.0
15	20.2	40.0	44.0

注文コード ORDERING CODE

04 6811 6XX 090 846+

RoHS 対応品
RoHS Compliant Product

金めっき Au Plated

極数 NUMBER OF POSITIONS

生産対応可能極数については、営業部に
ご確認願います。

Feel free to contact our sales department
for available numbers of positions.

梱包数量 4000個/リール
PACKING QUANTITY : 4000/Reel