

# MA112

# Application Note

**USB Vendor ID : 0x0E6A**

**USB Product ID : 0x0122**

**Version: 1.01**



## List of Contents

List of Contents .....	3
<b>1 Demo Board.....</b>	<b>4</b>
1.1 Whole Picture.....	4
1.2 Demo Board Hardware Instruction .....	5
1.3 Demo Board Circuit.....	6
<b>2 Driver Install .....</b>	<b>7</b>
<b>3 Revision History.....</b>	<b>10</b>
<b>4 Disclaimers.....</b>	<b>11</b>

# MA112

---

## 1 Demo Board

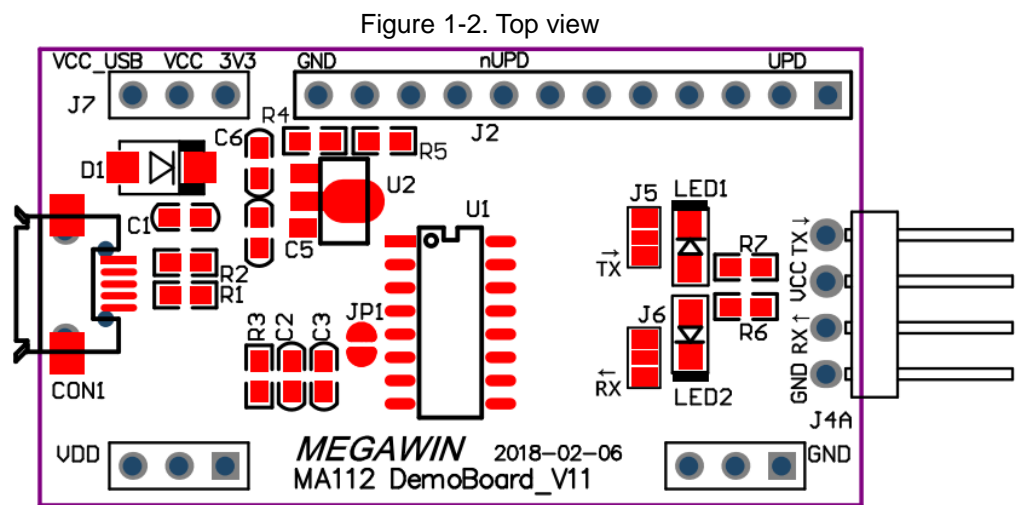
### 1.1 Whole Picture

Figure 1-1. MA112 demo board



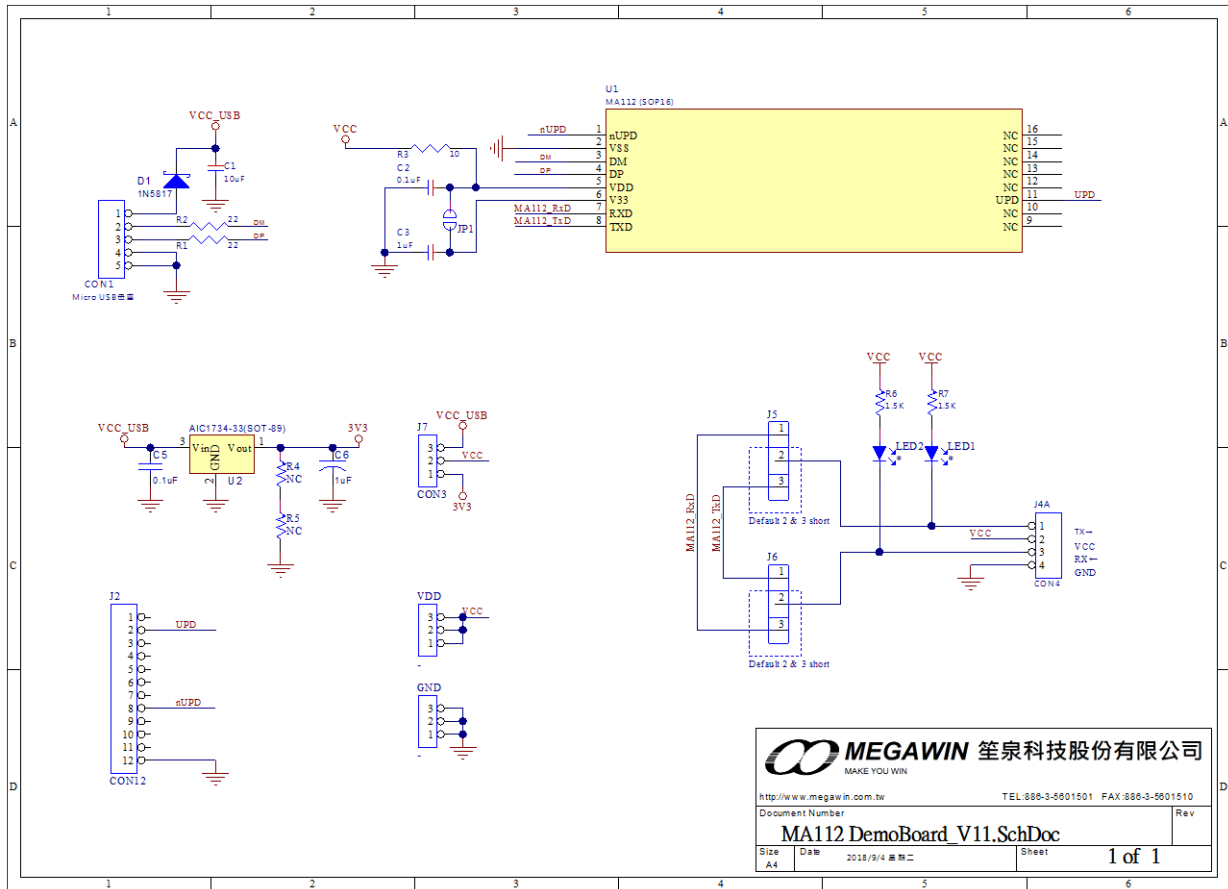
1.2 Demo Board Hardware Instruction

1. CON1 : Micro USB Connector
2. J7 :
  - a. VCC\_USB -- USB 5V Output
  - b. VCC -- Select 5V or 3V3 to MA112(Default 5V)
  - c. 3V3 -- On-Board LDO 3.3V Output(U2)
3. U1 : MA112
4. J2:
  - a. GND
  - b. NC
  - c. NC
  - d. NC
  - e. nUPD
  - f. NC
  - g. NC
  - h. NC
  - i. NC
  - j. NC
  - k. UPD
  - l. NC
5. J4A : UART
  - a. TX : MA112 UART TXD
  - b. VCC : VCC Output
  - c. RX : MA112 UART RXD
  - d. GND
6. LED :
  - a. LED1 : MA112 UART TXD LED.
  - b. LED2 : MA112 UART RXD LED.



## 1.3 Demo Board Circuit

Figure 1-3. Demo board circuit



User can choose MA112 power at 5V or 3V3 from connector “J7”.

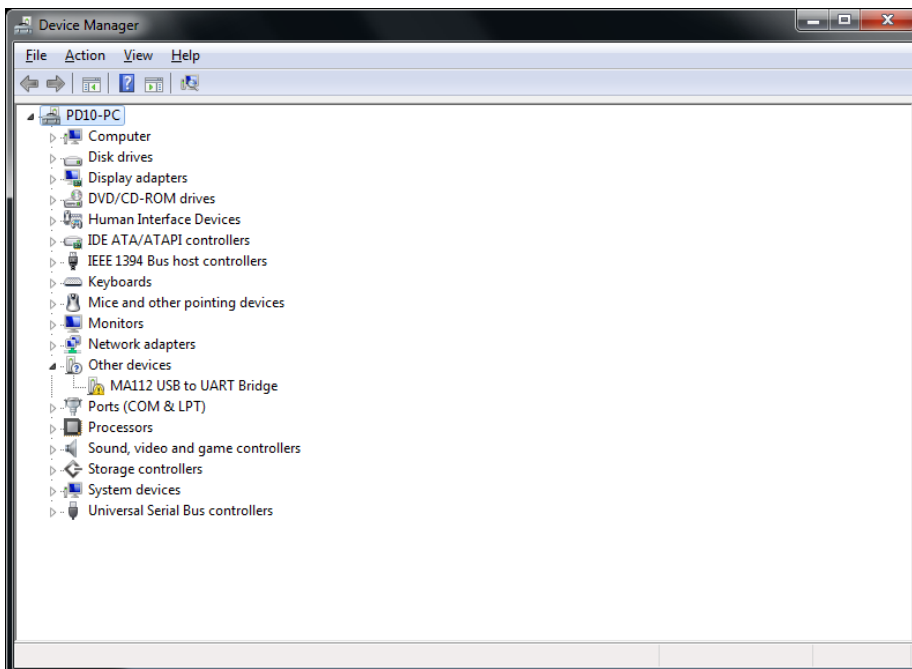
When user selects 5V, user should tie pin 2 & 3 at connector “J7” and open JP1.

When user selects 3V3, user should tie pin 1 & 2 at connector “J7” and close JP1.

## 2 Driver Install

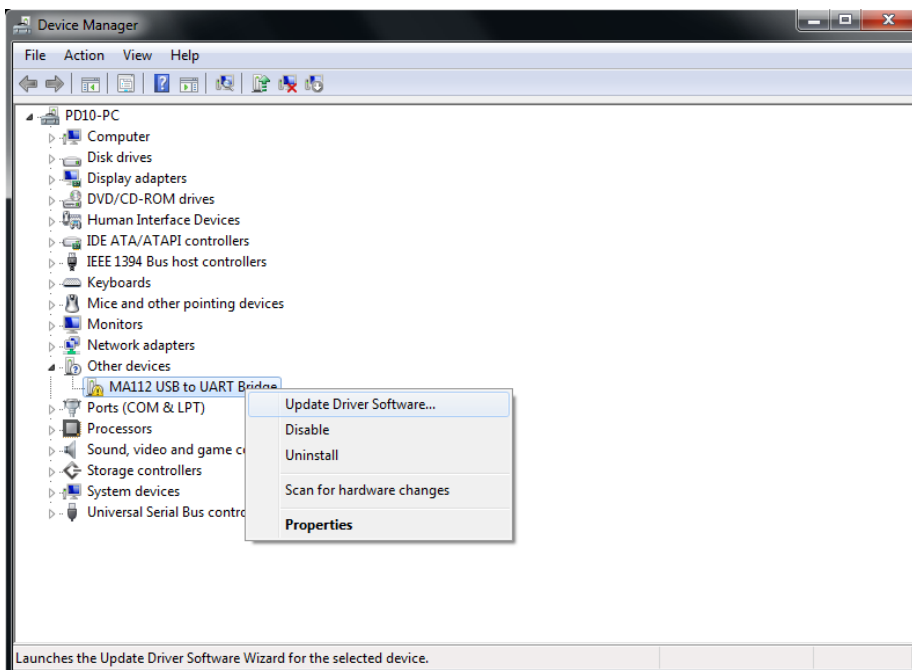
Step 1: The user plug MA112 demo board into any USB port in a PC, then open Device Manager.

Figure 2-1



Step 2: Click "Right" key on MA112 USB to UART Bridge and "Update Driver Software"...

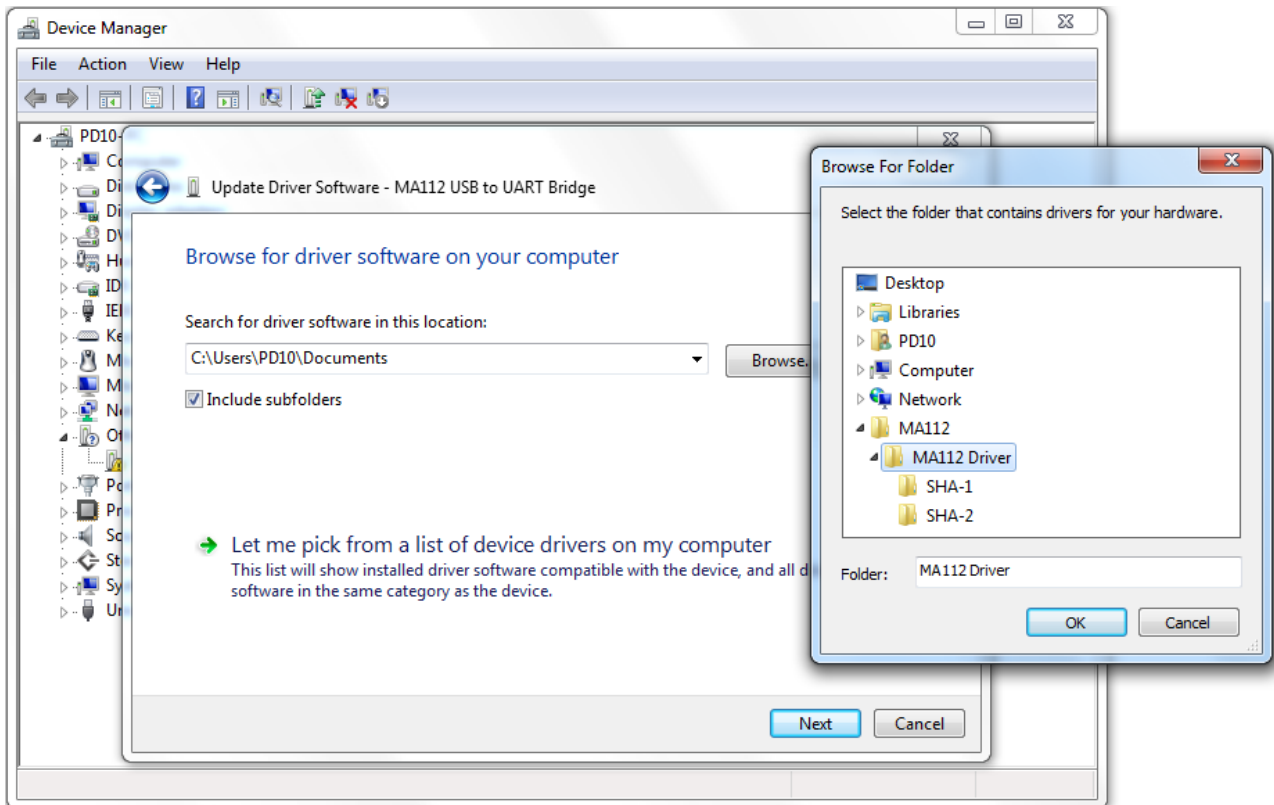
Figure 2-2



# MA112

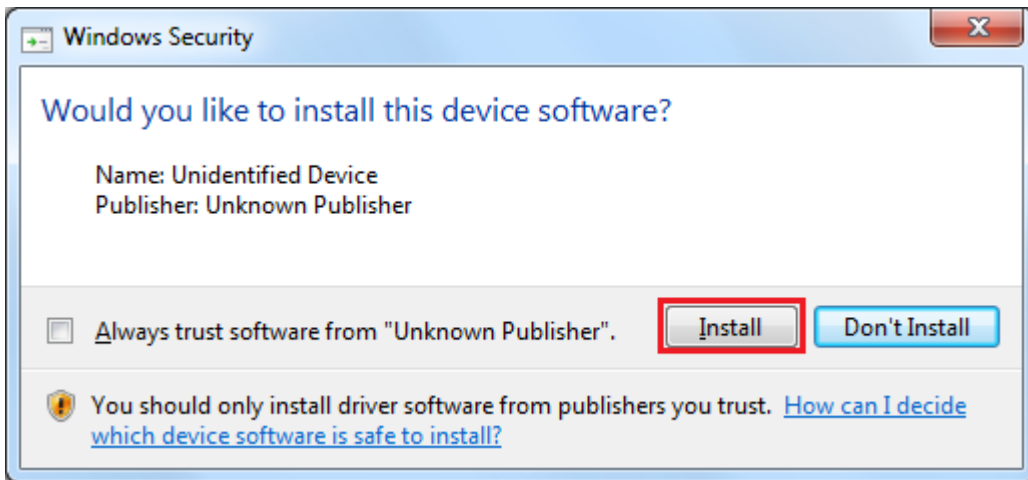
Step 3: Indicate MA112 Driver path in the user's PC, OS will select SHA-1 or SHA-2 automatic.

Figure 2-3



Step 4: Click "Install" and wait a while.

Figure 2-4





Step 5: The user install driver successfully...

Figure 2-5

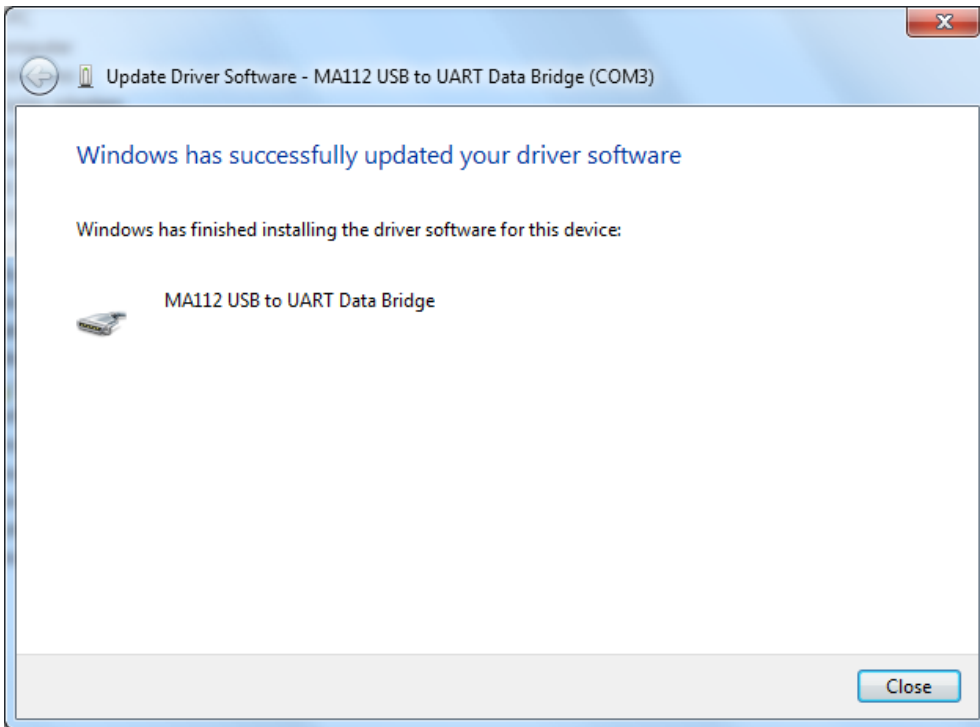
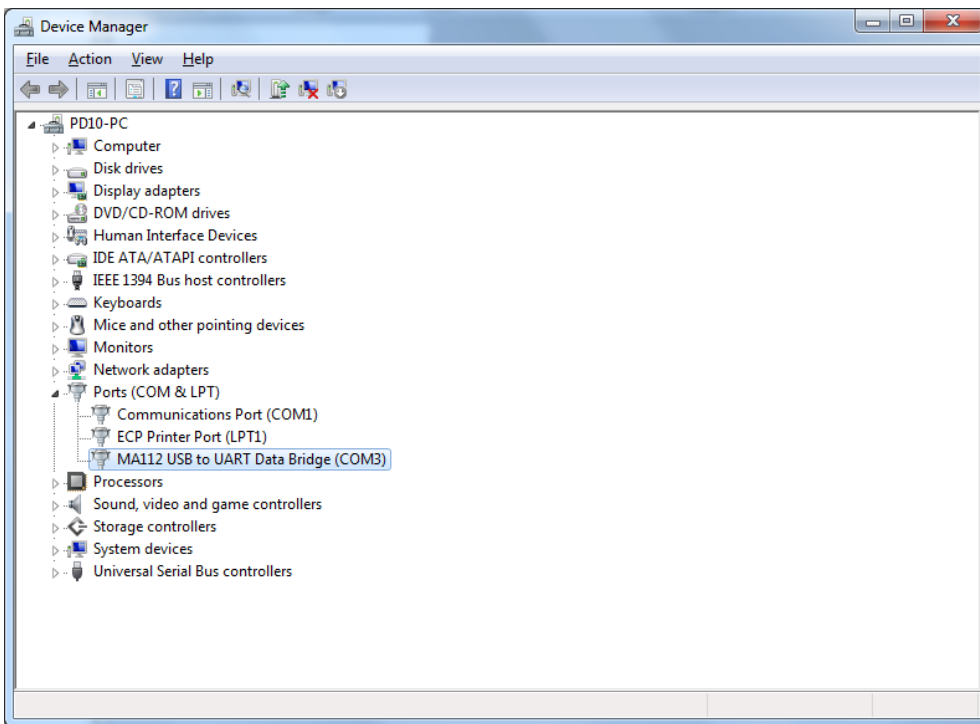


Figure 2-6



### 3 Revision History

Table 3-1. Revision History

<b>Rev</b>	<b>Descriptions</b>	<b>Date</b>
V1.00	Initial version	2018/05
	-----	-----
V1.01	Add install driver procedure.	2018/09
	-----	-----

## 4 Disclaimers

Herein, Megawin stands for "*Megawin Technology Co., Ltd.*"

**Life Support** — This product is not designed for use in medical, life-saving or life-sustaining applications, or systems where malfunction of this product can reasonably be expected to result in personal injury. Customers using or selling this product for use in such applications do so at their own risk and agree to fully indemnify Megawin for any damages resulting from such improper use or sale.

**Right to Make Changes** — Megawin reserves the right to make changes in the products - including circuits, standard cells, and/or software - described or contained herein in order to improve design and/or performance. When the product is in mass production, relevant changes will be communicated via an Engineering Change Notification (ECN).