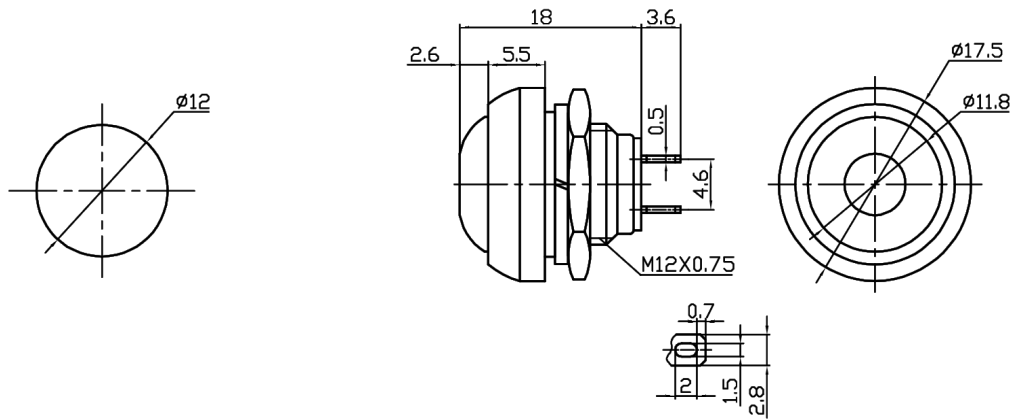


## PUSH BUTTON SWITCH 12MM WATERPROOF MOMENTARY

Rounded, Big Size, Flush Mounting on Panels. Large top for comfortable switching.

### DIMENSIONS



### SPECIFICATIONS

Product Name	Push to On Momentary Switch
Operation	Momentary
Rating	1A@250VAC / 3A@125VAC
Voltage Rating	250VAC max
Contact Resistance	<20m $\Omega$ max
Insulation Resistance	500VDC 100M $\Omega$ min
Dielectric Strength	1000VAC, 1 Minute
Operating Temperature	-25°C to +85°C
Electrical Life	50,000 Cycles

### ORDERING DETAILS

Sunrom Part#	Color	Ordering Page
5870	Green	<a href="http://www.sunrom.com/m/5870">http://www.sunrom.com/m/5870</a>
5872	Orange	<a href="http://www.sunrom.com/m/5872">http://www.sunrom.com/m/5872</a>
5866	Red	<a href="http://www.sunrom.com/m/5866">http://www.sunrom.com/m/5866</a>
5867	Black	<a href="http://www.sunrom.com/m/5867">http://www.sunrom.com/m/5867</a>
5868	Blue	<a href="http://www.sunrom.com/m/5868">http://www.sunrom.com/m/5868</a>
5869	White	<a href="http://www.sunrom.com/m/5869">http://www.sunrom.com/m/5869</a>
5871	Yellow	<a href="http://www.sunrom.com/m/5871">http://www.sunrom.com/m/5871</a>