

RF Decoder - PT2272 - 433 MHz

Sunrom Part#
1421

Decodes variety of RF remote control transmitters at 433 Mhz which uses encoder chip like PT2260, PT2262, PT2264, HS2260, SC2262, SC2260

User's
Manual

Doc Version: 1
9-Apr-16

A quality product, proudly made in India by

SUNROM Electronics

<http://www.sunrom.com/m/1421>

Table of Contents

Introduction.....	3
Typical Application	3
Features	3
Interfacing with Microcontroller	3
Specifications	4
Module Pin Details.....	4
Board Schematic	4
AddressJumper	5
Product Dimensions	6
Support	7
Disclaimer	7

Introduction

The product is a combination of 433 MHz RF Receiver and decoder IC PT2272 which is a fixed address type decoder. Fixed address means the user at transmitter and receiver will set address pins high or low and only the matching address will respond, else it is ignored.

Typical Application

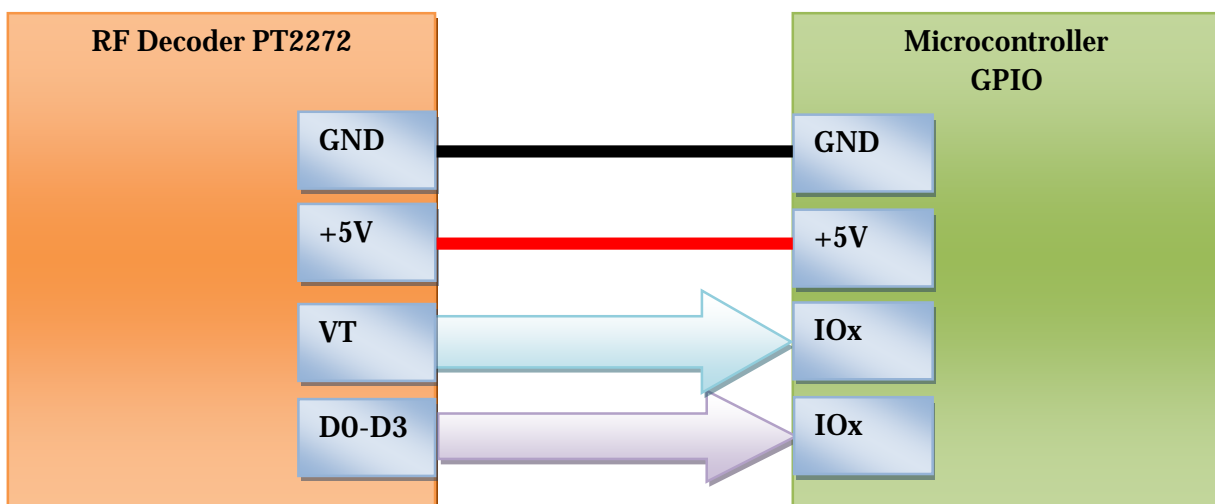
- Remote control
- Security Systems
- Sensor Networks
- Data collection

Features

- Simple & Easy to use
- LED indication for valid data
- All interfacing IO on header
- 4 bit data output
- Address pads on PCB
- Crystal Stable RF Receiver

Interfacing with Microcontroller

If you want to operate with microcontroller then it's very simple to connect.



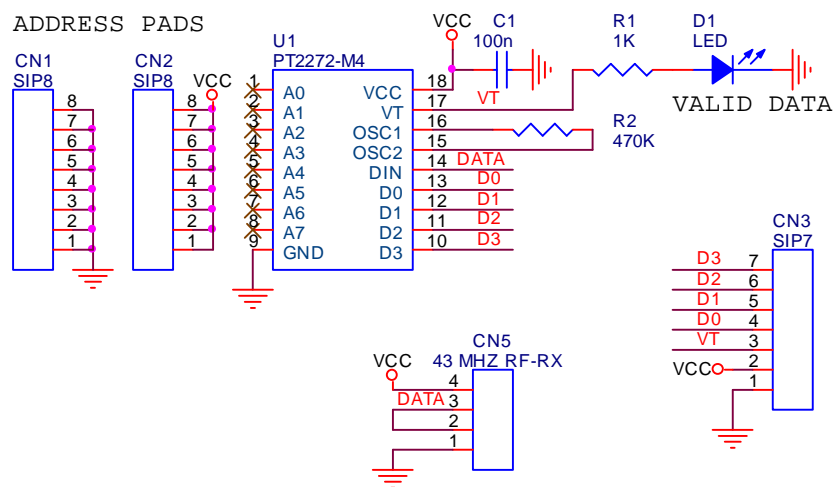
Specifications

Parameter	Value
Working Voltage	5V DC regulated power supply
Current Consumption	25 mA
Frequency of Operation	433 MHz
On Board IC	PT2272

Module Pin Details

Pin	Details
GND	Common Ground
+5	Regulated positive power input 5V DC
VT	Goes high when valid data is received. LED is connected on pin for indication
D0-D3	Binary data output as per input at transmitter side

Board Schematic



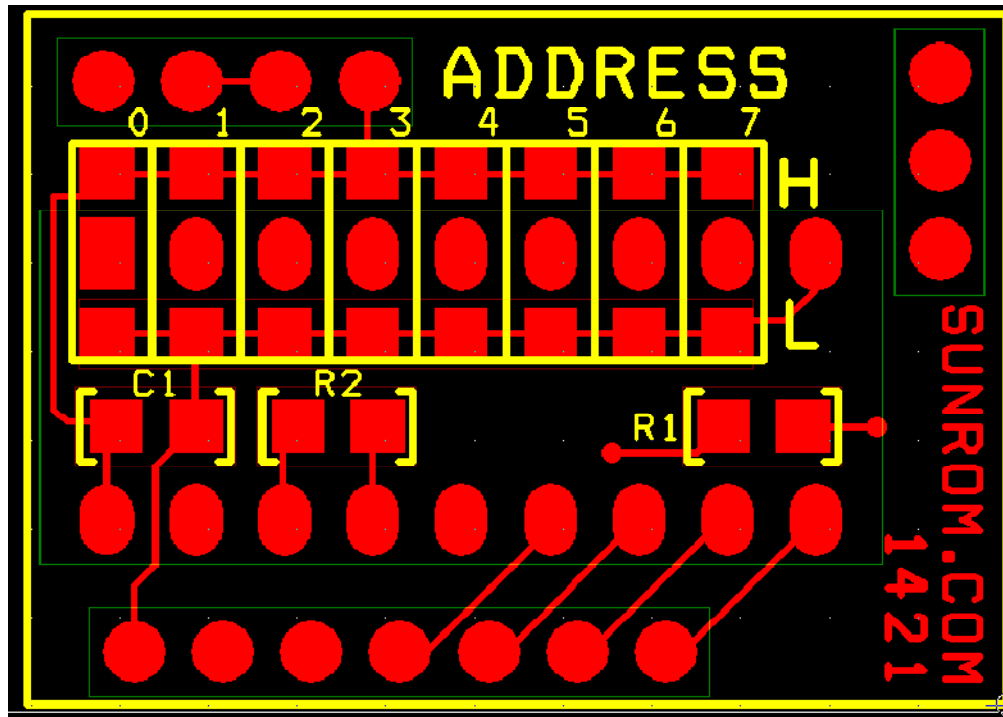
Sunrom Technologies		<u>http://www.sunrom.com</u>	
Title RF Receiver Decoder PT2272			
Code 1421		Rev 1	
Date: Thursday, March 10, 2016		Sheet 1	of 1

AddressJumper

If transmitter has different address than receiver then the receiver will ignore the data packet.

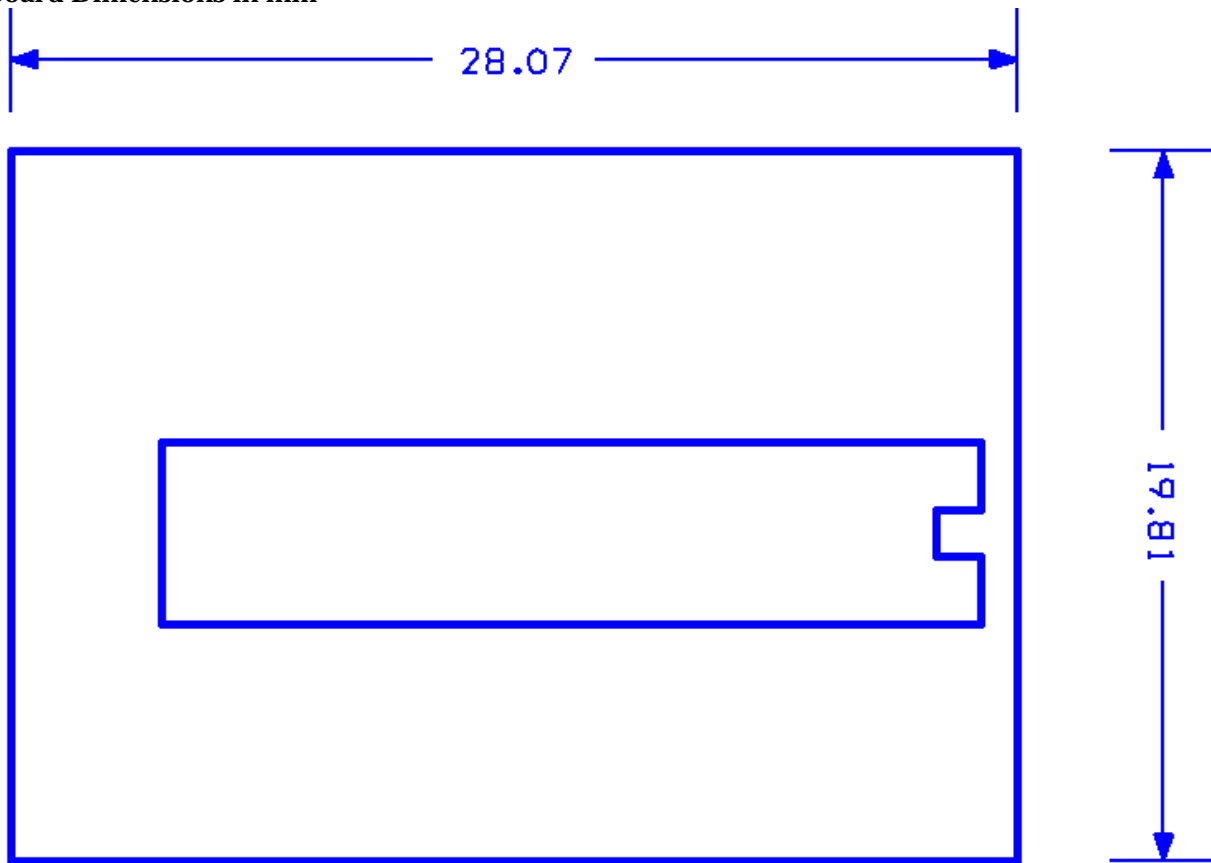
The option of address is to provide some security when multiple units are operated in same premises.

Default we provide with all pins floating. If you want you can short that address pin to either high or low to set a unique address.



Product Dimensions

Board Dimensions in mm



Support

Sunrom Electronics offers free technical support (www.sunrom.com/contact) for customers, until the end of the product's lifetime, so if something goes wrong, we're ready and willing to help!

Technical Support is available by email only and scope is limited to problem faced during use of the use of product and does not cover end user programming and hardware troubleshooting.

Each product passes through strict quality checks before it reaches you. So if something is not working out right, the first thing to doubt is the connections or programming of your hardware.

Disclaimer

Sunrom Electronics assumes no responsibility or liability for any errors or inaccuracies that may appear in the present document. Specification and information contained in the present schematic are subject to change at any time without notice.

Copyright © 2016 Sunrom Electronics. All rights reserved.