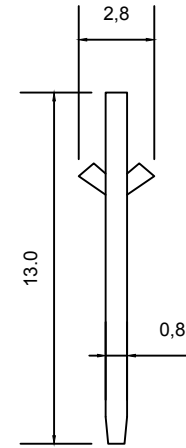
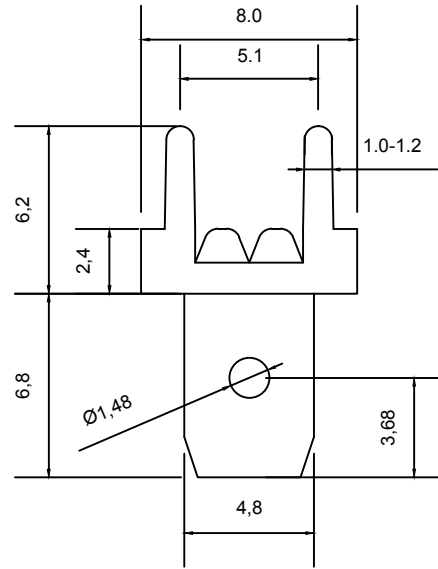
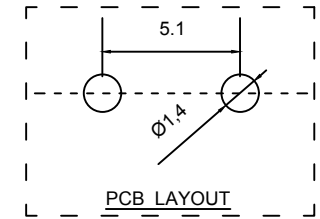


ROHS



TERMINAL:
>MATERIAL:C2680
>THICKNESS:0.8mm

NOTE:
1. CURRENT RATING:10A MAX
2. VOLTAGE RANGE:220V AC.DC
3. TEMPERATURE RANGE:-20°C TO 105°C



4.8mm Support Vertical PCB Quick Disconnect Terminal Lug Connector

Product Code 7453

<https://www.sunrom.com/m/7453>