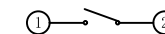
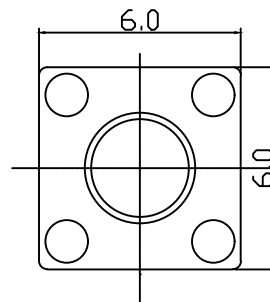
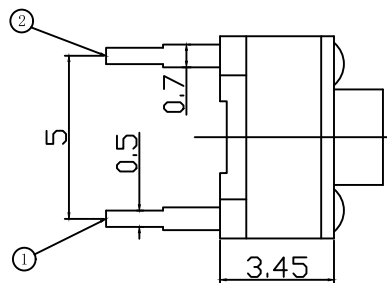
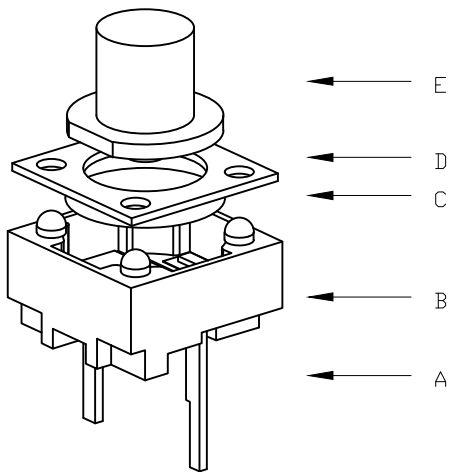
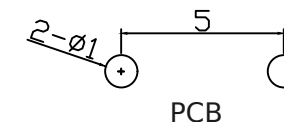
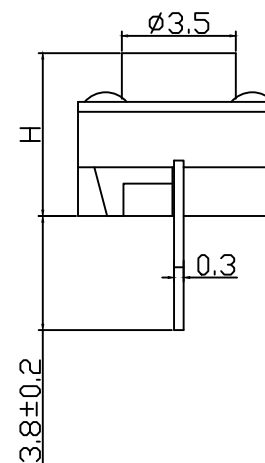
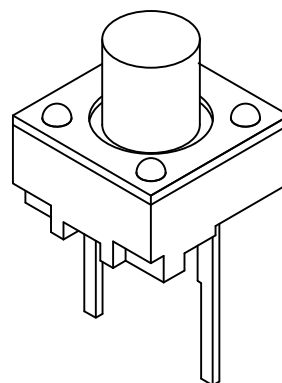


RoHS



CIRCUIT DIAGRAM



Specification

Operating Life	≥30000次
Contact rating	50mA@12V DC.
Insulation resistance	100MΩ min.
Contact resistance	100MΩ max
Dielectric Strength	250 V AC(1mm)
Travel	0.25±0.1MM

ITEM	DESCRIPTION	MATERIAL	QTY	FINISH/COLOR
E	button	PPA	1	black
D	Cover plate	iron	1	copper-tin
C	spring	Phosphor copper	1	Crossbond Silver
B	ontology	PPA	1	black
A	card	brass	1	Silver plating

Tactile Switch 2P TH 6x6mm
 Height mm
 4.3 <https://www.sunrom.com/m/7585>
 5 <https://www.sunrom.com/m/7586>
 6 <https://www.sunrom.com/m/7587>
 7 <https://www.sunrom.com/m/7588>