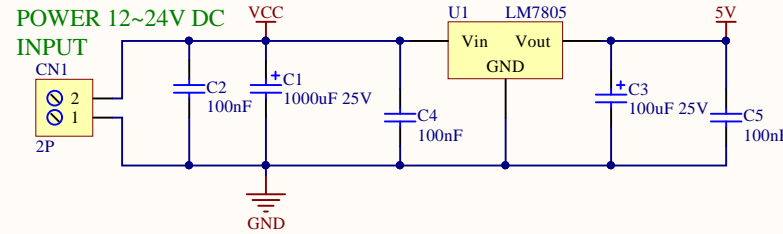
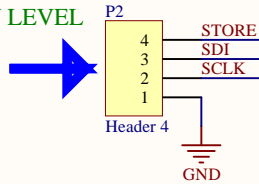


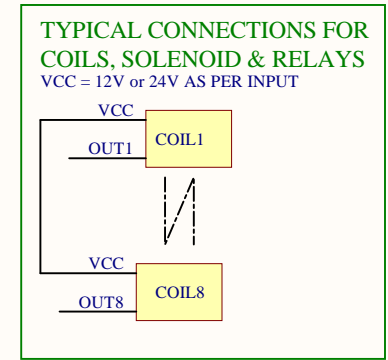
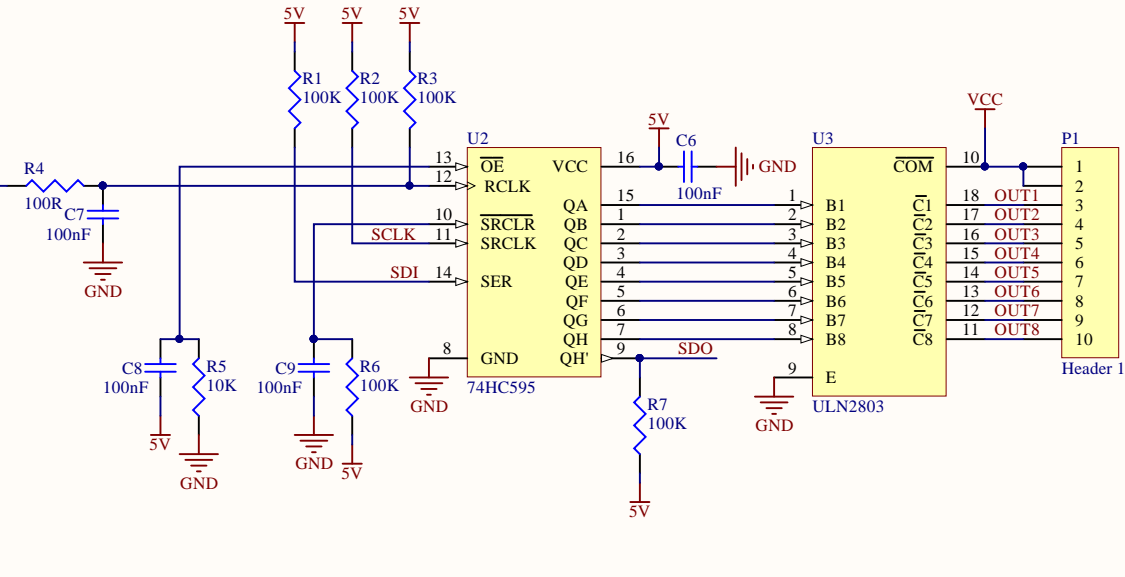
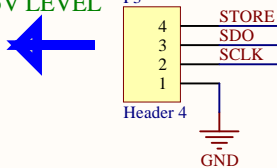
We had a requirement where we had to drive 50x solenoid valves(24V) from microcontroller. So we developed this solution. Using these boards you can create unlimited high voltage outputs using just 3 pins from your controller. Each Board gives you 8 outputs. You can add as many boards as required.



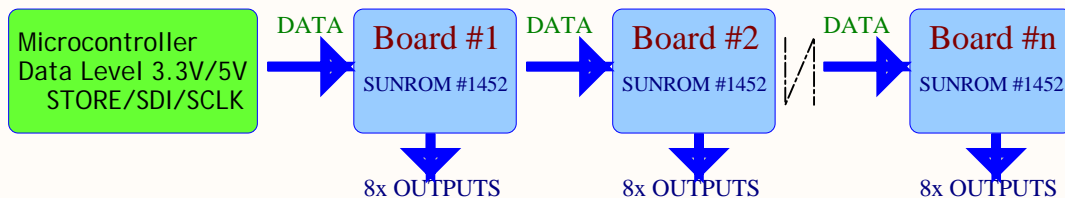
DATA INPUT FROM MCU/PREVIOUS BOARD
3.3V to 5V LEVEL

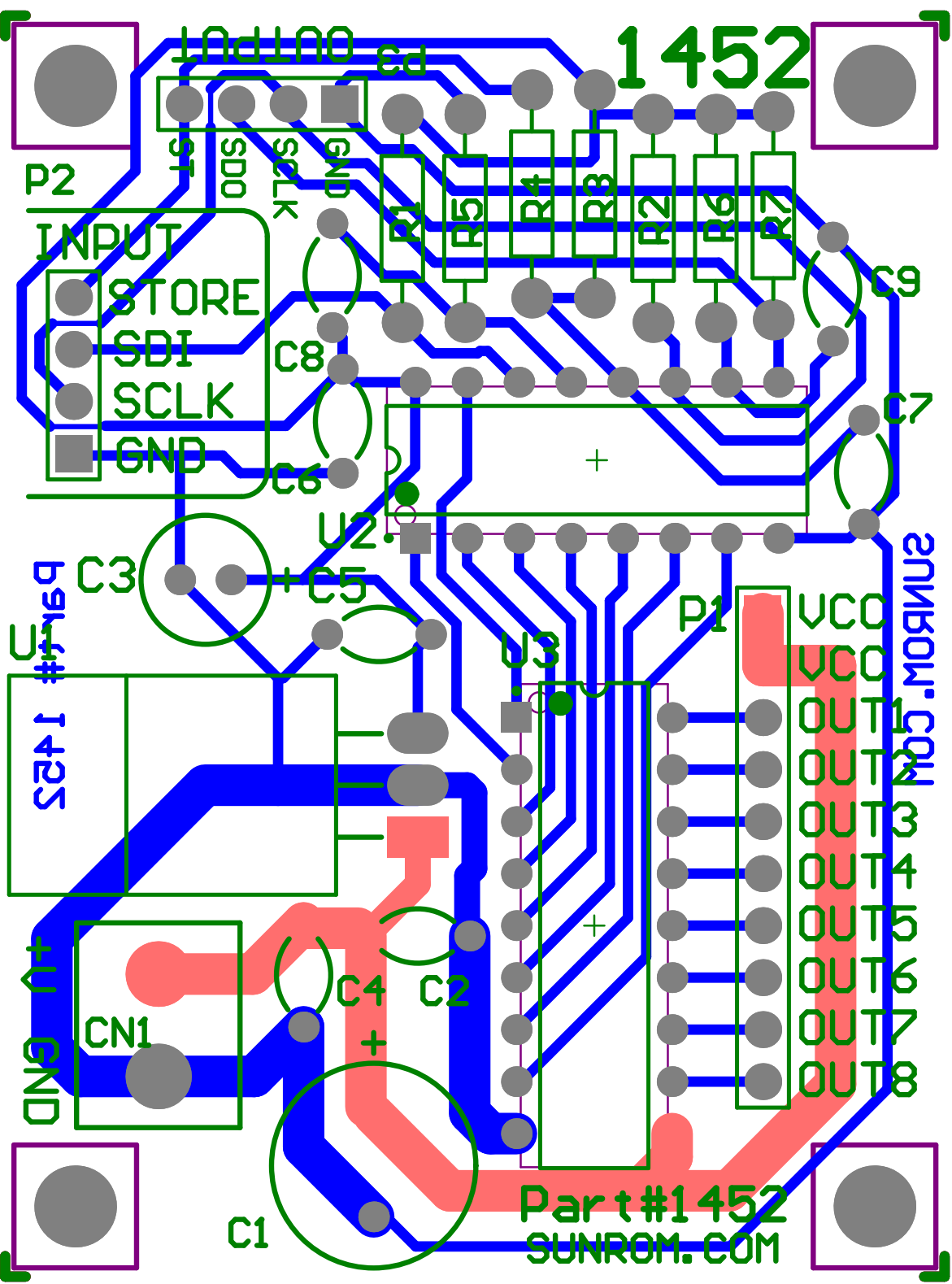


DATA OUTPUT TO NEXT BOARD FOR EXPANSION
3.3V to 5V LEVEL



TYPICAL USE - UNLIMITED OUTPUTS WITH JUST 3 PINS OF MCU





1452

P3 OUTPUT

P2

INPUT
STORE
SDI
SCLK
GND

Part # 1425

GND

C1

Part #1452
SUNROM.COM

SUNROM.COM

VCC
OUT1
OUT2
OUT3
OUT4
OUT5
OUT6
OUT7
OUT8

P1

U2

U3

15
SDO
SCLK
GND

R1

R5

R4

R3

R2

R6

R7

C9

C8

C6

C7

C3

C5

CN1

C4

C2

Comment	Designator	Quantity
1000uF 25V	C1	1
100nF	C2, C4, C5, C6, C7, C8, C9	7
100uF 25V	C3	1
2P	CN1	1
Header 10	P1	1
Header 4	P2, P3	2
100K	R1, R2, R3, R6, R7	5
100R	R4	1
10K	R5	1
LM7805	U1	1
74HC595	U2	1
ULN2803	U3	1